

Technical Bulletin

03-TB-918, Revision 1, 2011-04-05

OdaLog Type I-IV Time and Date Software Issue

Customer Information

This document provides details of an issue that occurred when customers attempted to connect to Type I OdaLogs from 12:00AM on 1 January 2011 and explains how the issue can be quickly resolved using updated software available on the OdaLog website.

1. Issue Description

From 12:00AM on 1 January 2011 any attempt to connect to a Type I OdaLog using OdaStat, OdaStat-E and OdaStat-G software resulted in a "Clock may not be set correctly" warning messages being displayed (see **Figure 1**).

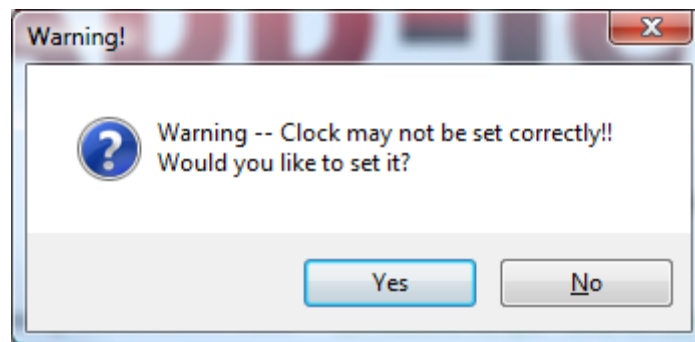


Figure 1 – “Clock may not be set correctly” warning message

Any following attempt to correct the time using the "Set Time" dialog box resulted in "Time Not Set" error message (See **Figure 2**)

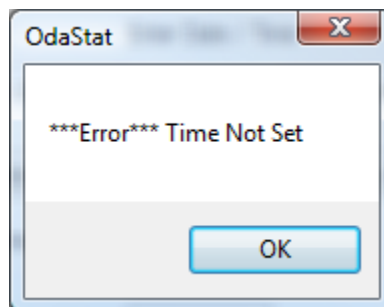


Figure 2 - "Time Not Set" error message

Inconsistencies and errors also occurred when checking or setting the "User Calibration Due Date" in the "Main" tab of the "Edit Parameters" window.

2. Issue Resolution

Programs that will automatically update OdaStat, OdaStat-E and OdaStat-G software to new versions that have resolved the time calculation issue have been installed on the <http://www.odalog.com/odalog/softsup.html> web page (See **Figure 3**). This web page can be accessed through a link in the "About OdaStat" dialog box that is displayed by right clicking the "Help" menu item in OdaStat, OdaStat-E and OdaStat-G (See **Figure 4**).

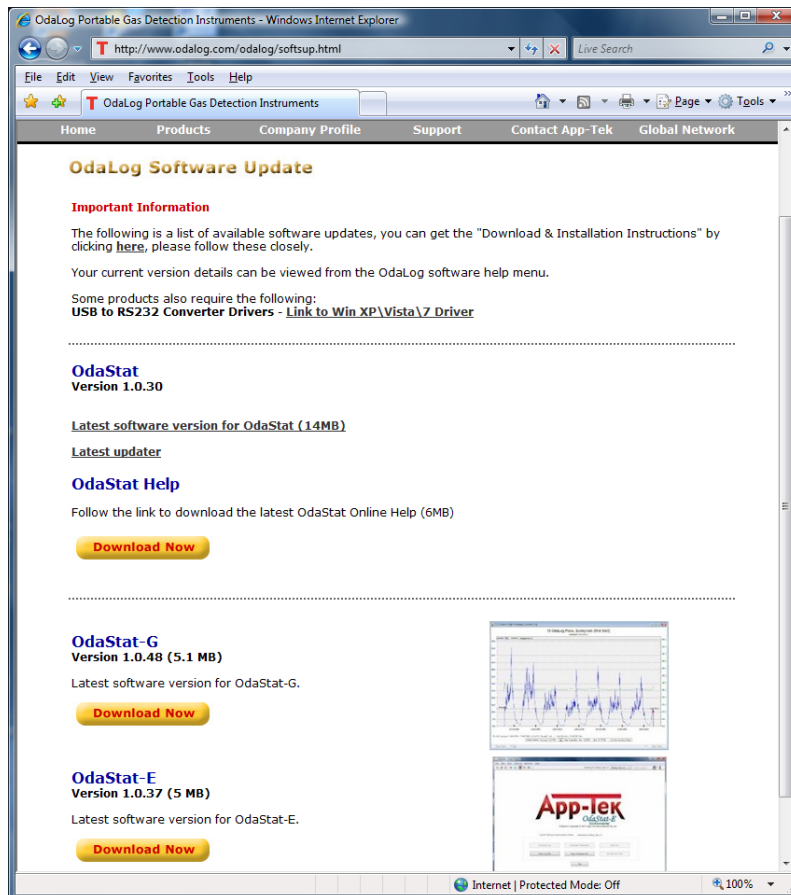


Figure 3 - Software Updates Web Page

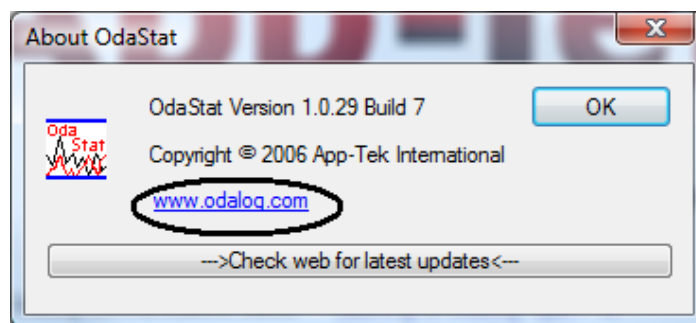


Figure 4 - "About OdaStat" dialog box

3. OdaStat Updater Program

The updated OdaStat program (version 1.0.30) is available from the "OdaStat" section of the <http://www.odalog.com/odalog/softsup.html> web page (see **Figure 5**). The "**Latest updater**" link can be used to download a file (OdaStatUpgraderV1030.exe) that will update an existing OdaStat program to version 1.0.30 from a previous version (for example, 1.0.29B7).

OdaStat
Version 1.0.30

[Latest software version for OdaStat \(14MB\)](#)

[Latest updater](#)

OdaStat Help

Follow the link to download the latest OdaStat Online Help (6MB)

Download Now

Figure 5 - OdaStat Update Program Links

When a link is clicked the "File Download" dialog box will appear (see **Figure 6**). This gives the option of either downloading and running the update program immediately or saving the download program in a location selected by the user so it can be run when ready.

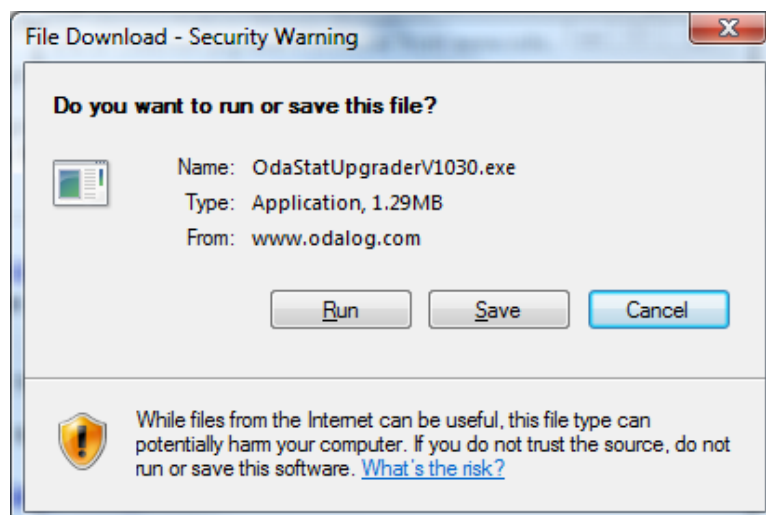


Figure 6 - "File Download" dialog box

4. OdaStat-E and G Updater Programs

The update programs for OdaStat-E (1.0.37 and OdaStat-G (version 1.0.48) are available from the "OdaStat-G" and "OdaStat-E" sections of the <http://www.odalog.com/odalog/softsup.html> web page (see **Figure 7**).

OdaStat-G Version 1.0.48 (5.1 MB)

Latest software version for OdaStat-G.

Download Now

OdaStat-E Version 1.0.37 (5 MB)

Latest software version for OdaStat-E.

Download Now

Figure 7 - OdaStat -E and G Update Program Links

The update program files (OSE_Update.exe and OSG_Update.exe) can be downloaded and run by clicking on the "Download Now" buttons. The programs are only for updating existing software and will not function if the OdaStat-E or G has not been previously installed.

5. OdaStat (Version 1.0.30) Installation Program

The "**Latest software version for OdaStat**" link (see **Figure 5**) can be used to download a program (OdaStatsetup.exe) that is used to install OdaStat version 1.0.30 on windows PCs with **NO existing copy installed**.